



QUICK-START INSTRUCTIONS:

These instructions have been designed for the experienced do-it-yourselfer. The instructions are meant to be a guide to show how easy it is to assemble your new Spa Renewal System. For detailed instructions refer to the installation manual included with every spa renewal system.

PUMP ROTATION:

The pump(s) included with your system ship from the factory at the 12:00 o'clock position. If your control has a low mounted heater (attached at the bottom) you will need to rotate the pump to the 3:00 position. Follow steps in Figures 1 through 3.



Fig. 1 - Loosen the four(4) retaining thru bolts

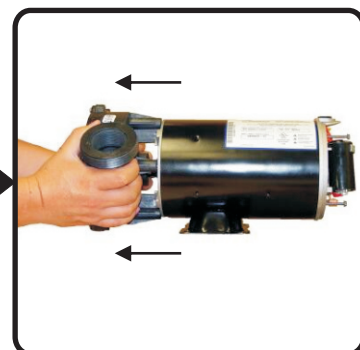


Fig. 2 - Pull out slightly on the wetend and rotate to desired position.



Fig. 3 - Re-Install and tighten four(4) retaining thru bolts

PUMP MOUNTING:

Now that the pump has been rotated, position it onto the base over the pre-drilled mounting holes and loosely secure using the mounting hardware provided. Follow steps in figures 4 through 5.



Fig. 4 - Place the pump riser over the (4) pre-drilled holes in the base closest to the edge.

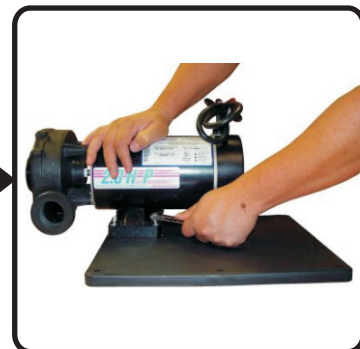


Fig. 5 - Position pump onto the riser and thread the (4) self-tapping screws through the pump bracket, riser and finally into the base. Do not fully tighten yet.

CONTROL MOUNTING:

Assemble pump header so it can be loosely installed for positioning purposes. Be sure that, when connected, the pump and control are properly positioned.

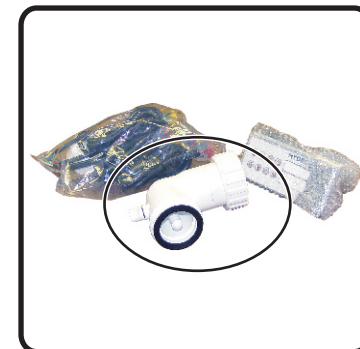


Fig. 6 - Remove pump header from carton

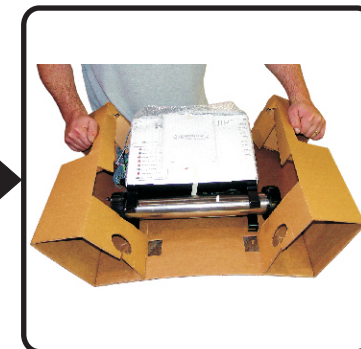


Fig. 7 - Remove control from carton and protective insert

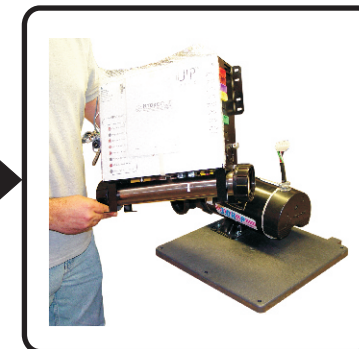


Fig. 8 - Position control on base in front of pump over pre-drilled holes

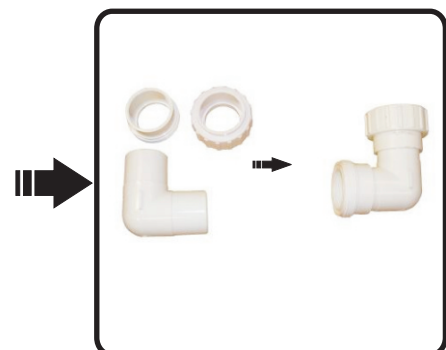


Fig. 9 - If doing a standard assembly glue the parts together as shown above. If doing a non standard assembly then use the pieces as needed.

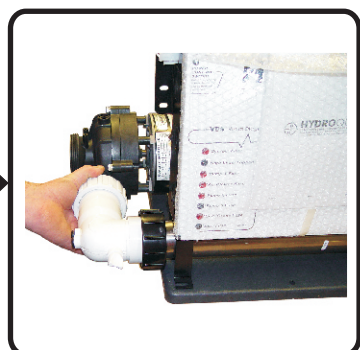


Fig. 10 - Hand tighten pump header at pump and heater connection



Fig. 11 - Secure control using the mounting hardware provided



Fig. 12 - Tighten the pump to heater header making sure gasket and O'rings are present. Unit is now assembled and ready to install.

Prior to beginning the installation:

Observe your current system and note control box, heater, pump(s) and blower placement. Use this as your guide to installing your new "Spa Renewal System". Be sure to identify dual and/or single speed pump(s) in the system.

Plumbing Considerations:

It is important to identify the plumbing systems of the spa.

Suction Line - Water coming from the spa (to be heated) via suction fittings and/or filter connected to front of pump(s).

Return Line - Water being returned to the spa (heated) via the jets and/or filter connected to the side or top of pump(s) through heater to spa.

Air Blower - Provides extra water action via an integrated air channel or injectors (Not on all spas) connected to blower.



HYDROQUIP™

510A N. Sheridan Street • Corona, CA 92880-2024
Email: info@hydroquip.com • Internet: <http://www.hydroquip.com/>
Telephone: 951.273.7575 • Fax: 800.332.7190